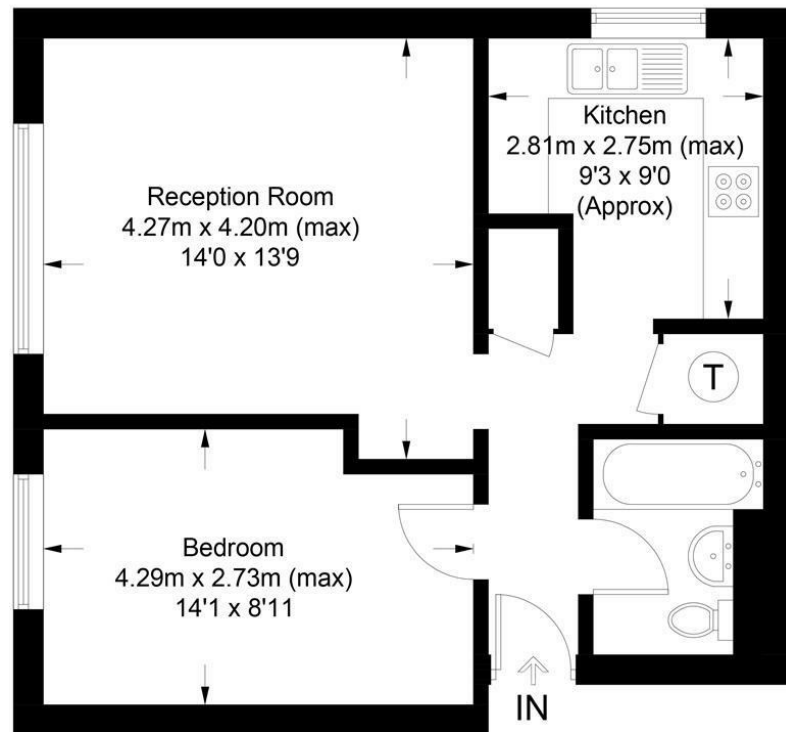


# Montague Road, Wimbledon, SW19 1SY

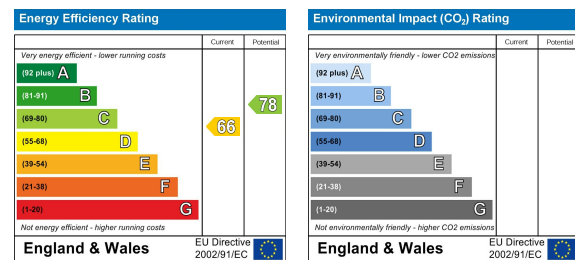
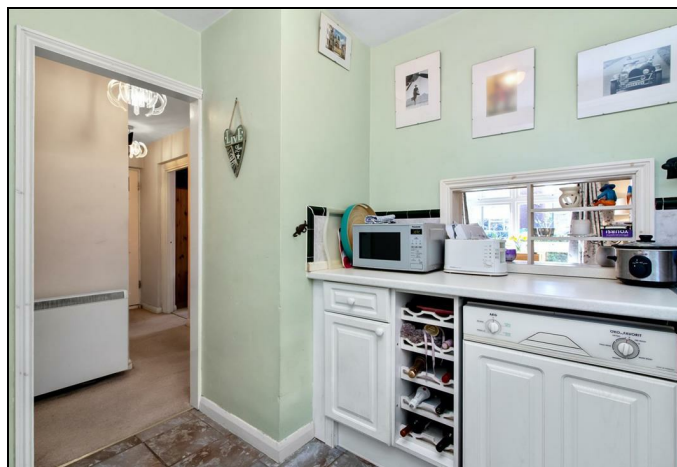
## Montague Road, SW19

Approximate Gross Internal Area = 46.5 sq m / 500 sq ft



This floor plan is for representation purposes only and is not drawn to scale. The Gross Internal Area includes outbuildings shown on the plan. Whilst every attempt has been made to ensure the accuracy of the plan measurements of doors, windows and rooms are approximate only and should be checked before making any decisions reliant upon them. Copyright Bespokeplans.co.uk (ID836551)

**FOR A FREE MORTGAGE QUOTE AND BEST MORTGAGE RATES, CALL ELLISONS MORTGAGE ADVISOR ON 020 8944 9494**



# Ellisons

**Wimbledon Sales**  
 13 Queens Road, Wimbledon  
 London SW19 8PF  
 T 020 8944 9494  
 E [wimbledon@ellisons.uk.com](mailto:wimbledon@ellisons.uk.com)  
[www.ellisons.uk.com](http://www.ellisons.uk.com)

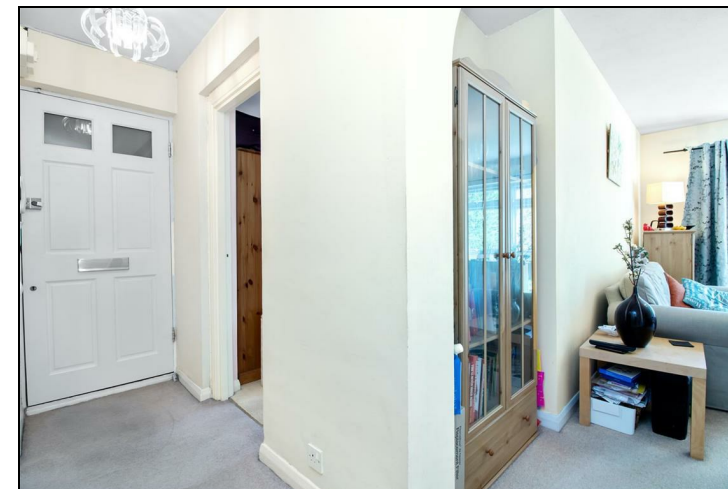
## Montague Road Wimbledon, SW19 1SY



**£325,000: Leasehold**

You have a fantastic, sought after property that we would love to sell for you!

A well presented, one double bedroom, purpose built flat located on a sought after road within close proximity of Wimbledon town centre, mainline and Northern Line stations. Having been tastefully decorated throughout this spacious flat has a large bedroom, well equipped separate kitchen, family bathroom and a bright lounge/dining room. With the added benefit of no onward chain, off-street parking and a long lease this is an ideal first time purchase or buy to let investment so an early viewing is highly recommended.



### SPECIFICATION:

- Purpose Built Apartment
- Long Lease
- Large Double Bedroom
- Sought After Location
- Close to Transport Links
- Spacious and Bright
- Off-Street Parking
- No Onward Chain
- EPC Rating D

